

HS MAST SLIDER SYSTEM SIZE 50

The **TRACK** extrusion is made of aluminium alloy with a hardcoat black anodised finish.

Weight = 0.65 kg/m; hole spacing = 100 mm.

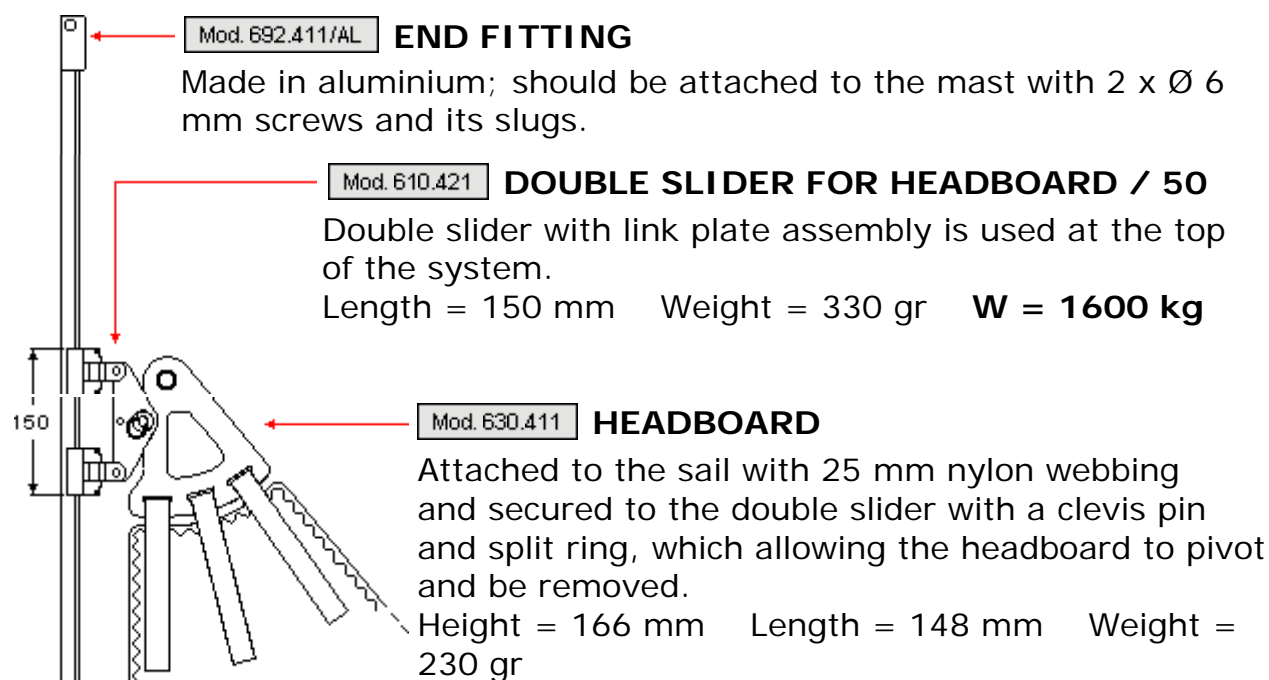
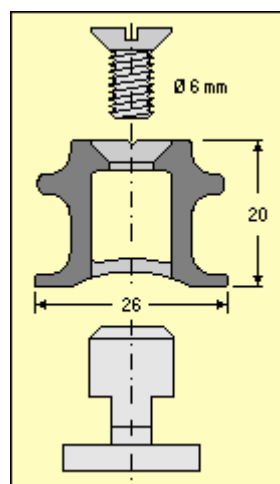
Available in three versions:

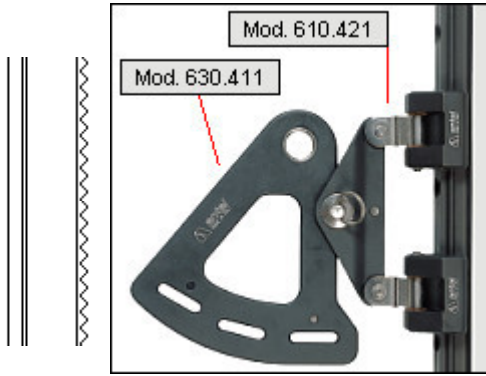
For boats up to 52 ft

Mod.601.121 This model requires drilling and tapping holes in the mast; track will be screwed to the mast; lengths of 3, 4 and 6 m available.

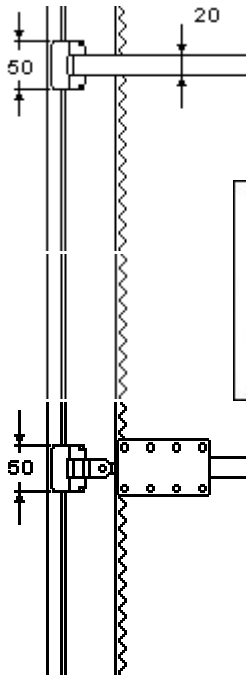
Mod. 601.131 Designed for mounting with slugs, without drilling the mast; with the mast in vertical position; lengths of 2 m available.

Mod. 601.141 Designed for mounting with slugs, without drilling the mast; with the mast in horizontal position; lengths of 3, 4 and 6 m available.



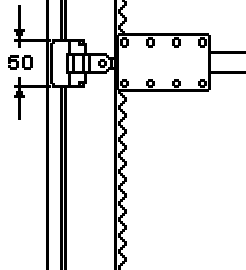


Also available is Cat Version Headboard
 Height= 167 mm
 Length= 179 mm
 Weight= 200 gr



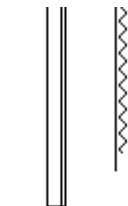
Mod. 614.411 SIMPLE SLIDER / 50

One simple slider should be attached to the sail with 20 mm webbing between two battens.
 Height = 50 mm Weight = 100 gr **W = 800 kg**



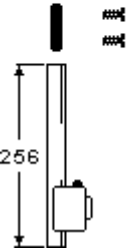
Mod. 610.401 SLIDER WITH JOINT / 50

The AISI 316 s/ steel triaxial joint ensures that the batten can freely orient itself; it will be screwed to the batten end fitting that will be provided with a 10 MA hole.
 Height = 50 mm Weight = 140 gr
W = 800 kg



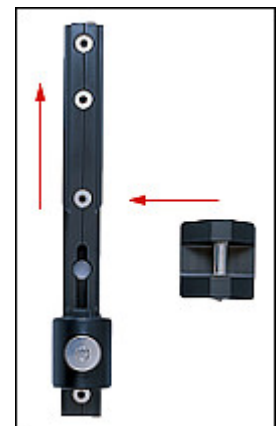
Mod. 690.421 TRACK JOINT

In order to ensure proper alignment the sections of track can be joined together with a nylon fitting; track joint is supplied with 2 screws.

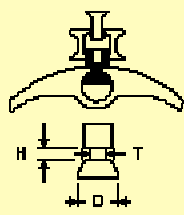


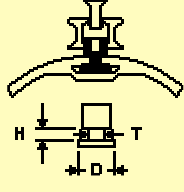
Mod. 602.421 LOADER

Allows the cars to be loaded and unloaded easily; the loader includes a stop pin which provides two positions: open and closed; the loader is secured to the mast with two 6 mm screws and its slugs.
 Height = 256 mm Weight = 250 gr



SLUGS: 8 standard models for round or flat grooves are available; custom slugs are made on request; the slugs are provided in kits of 20 pieces (20 slugs and 20 screws); each kit includes enough parts to attach 2 m of track with 100 mm hole spacing. Screws will always be fixed using Loctite 222.

SLUGS - ROUND GROOVE				
	MODEL	T mm	D mm	H mm
	50 R 4	3.7	9.7	2.5
	50 R 6	5.5	11.5	2.5
SCREWS Ø 6 x 14 mm				

SLUGS - FLAT GROOVE				
	MODEL	T mm	D mm	H mm
	50 F 5	4.8	19.0	6.7
	50 F 6	5.8	19.0	6.7
	50 F 8	7.8	19.0	6.7
	50 F 10	9.6	24.0	6.7
	50 F 12	11.8	24.0	-- -
	50 F 14	13.6	24.0	-- -
SCREWS Ø 6 x 16 mm				



Mod. 601.201

INSTALLATION TOOL
It is necessary to position the slugs with the mast in vertical position; with track mod. 601.131.