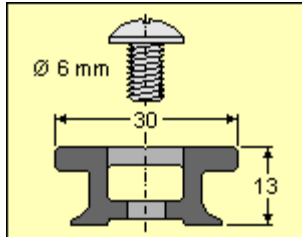


HS MAST SLIDER SYSTEM SIZE 90

This system is designed for out-and-out racing boats, with carbon fibre masts, very large mainsails, overall length over 60 ft and for large mono-hulls over 100 ft.

For 60 ft multi-hull



Mod. 601.122/HS **TRACK**

The extremely light (500 gr/m) hard black anodised aluminum profile is very small (only 13x30 mm). It is fixed directly to the mast with 6 mm screws every 50 or 25 mm (without inserts) and is available in 3 and 6 m sections.

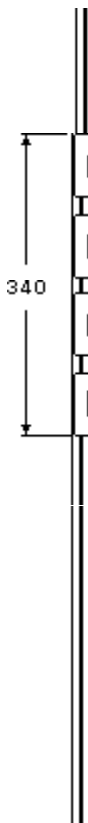
Mod. 601.122/R **TRACK RACE**

As above with lightening holes, weight = 460 gr/m.



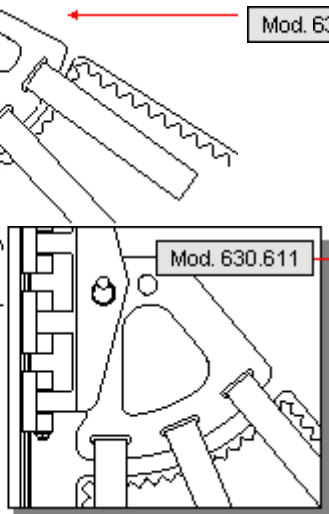
Mod. 692.811/AL **END FITTING**

Made in aluminium; should be attached to the mast with 2 x 6 mm screws.



Mod. 610.841/H **QUADRUPLE CARRIAGES FOR HEADBOARD**

4 x 70 mm sliders connected together.
Length = 340 mm Weight = 1370 gr **W = 5200 kg**



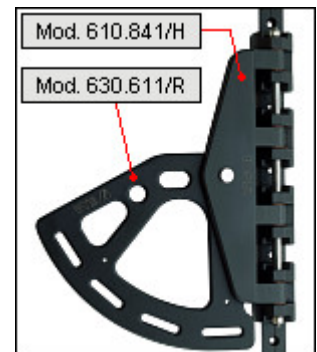
Mod. 630.611/R

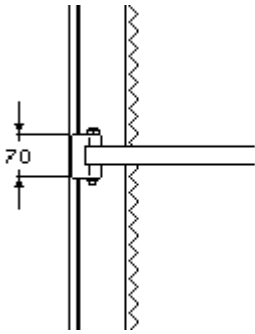
HEADBOARD CAT VERSION

Height = 225 mm
Length = 250 mm
Weight = 700 gr

HEADBOARD STANDARD VERSION

Height = 225 mm
Length = 220 mm
Weight = 800 gr



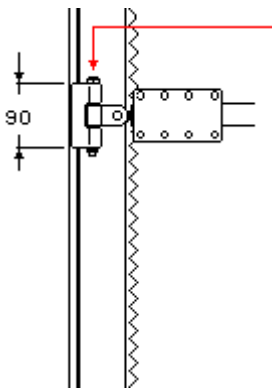


Mod. 610.811/H

SIMPLE SLIDER / 70

One simple slider should be attached to the sail with 25 mm webbing between two battens.

Height = 70 mm Weight = 190 gr **W = 1500 kg**



Mod. 610.801/H

SLIDER WITH JOINT /90

The AISI 316 s/steel triaxial joint ensures that the batten can freely orient itself; it will be screwed to the batten end fitting that will be provided with 14 MA hole.

Height=90 mm Weight=370 gr
W=1900 kg



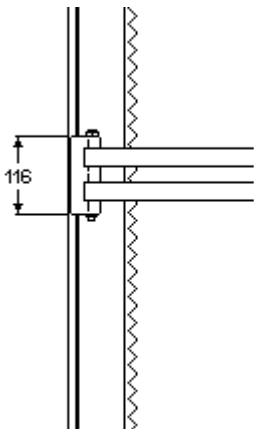
SLIDER WITH JOINT

Mod. 610.901/H

/110

As above but with height = 110mm:

Height=110 mm Weight=450 gr
W=2200 kg



Mod. 610.812/H

REEF DOUBLE SLIDER / 116

For the reefing position there is a longer slider webbed to the sail with 2 x 25 mm webbing.

Height = 70 mm Weight = 190 gr **W = 1500 kg**

SBR CONNECTION

On request the slider is supplied with a special connection for Antal SBR receptacles.



Mod. 610.901/H
with SBR joint