

GENOA TRAVELLERS TUBULAR TRACK



The new "Tubular Track" genoa car system is composed of a series of modular fittings designed for light weight and ease of adjustment and control.

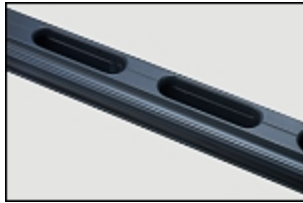
Two sizes are available for boats up to 36 ft. (size 45), and up to 42 ft (size 60).

The system's unique method of running the control line inside the track results in a more organized and "cleaner" deck lay-out.

The HS composite fibre cars provide the following advantages: low friction, light weight, no maintenance and cars That can easily be removed from the track.

Size 100 ball bearing travellers can be also fitted on this tubular track.

TUBULAR TRACK SIZES 45 & 60



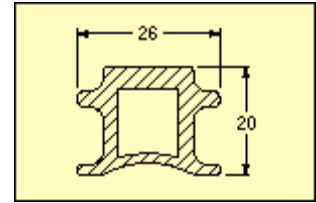
Mod. 601.321

TUBULAR TRACK

Light alloy extrusion with lightening holes. Hard black anodised.

The car control line runs on the inside of the track.

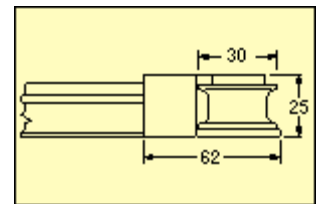
Weight = 0,5 kg/m Screws = 6MA/100 mm



Mod. 691.300

AFT END FITTING (45-60)

The aft end fitting is mounted directly on the back end of the track and allows the control line to be led in any direction, port or starboard.

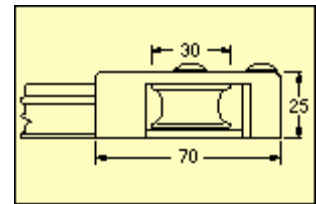


Mod. 691.310

FORWARD END FITTING (45)

This model with one sheave offers a 2:1 purchase; it's suitable for size 45.

Weight = 130 gr
Screws = 2 x 6MA

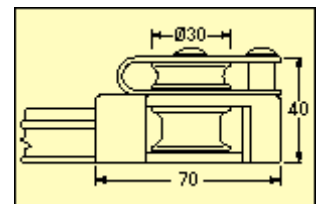


Mod. 691.320

DOUBLE FORWARD END FITTING (45)

This model with two sheaves offers a 3:1 or 4:1 purchase; it's suitable for size 45.

Weight = 160 gr
Screws = 2 x 6MA



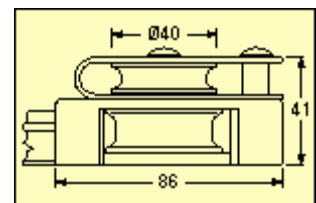
Mod. 691.420

FORWARD END FITTING (60)

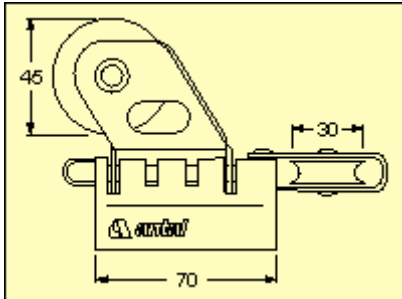
Only this model is available for size 60.

It's fitted with 2x40 mm sheaves and offers a 3:1 or 4:1 purchase.

Weight = 230 gr
Screws = 2 x 6MA



GENOA CAR SIZE 45



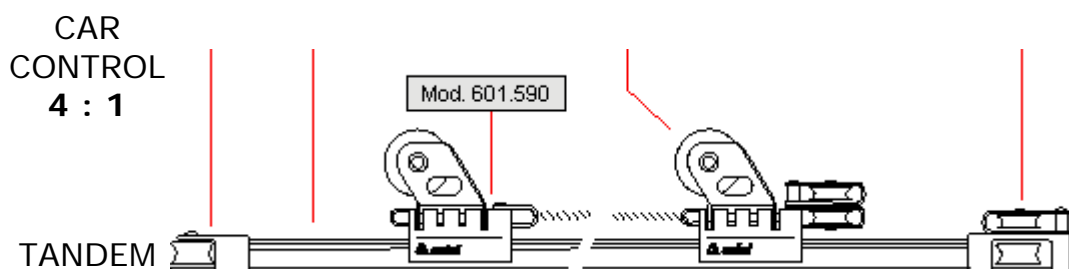
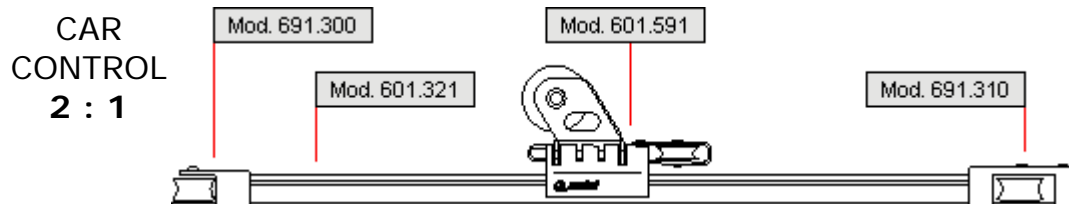
For boats up to 36 ft



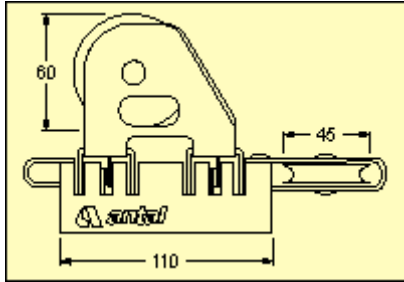
SIZE 45 CAR

Machined from a light alloy extrusion and hard anodised, fitted with a 316 s/steel swinging structure (about 45°). The sheave is made of (HRM) resin with 2 races of ball bearings. The slider runs on self-lubricating HS fiber inserts. Size 45 is suitable for boats up to 36 ft.

Weight = 0,29 kg **W = 1200 kg** R = 2400 kg



GENOA CAR SIZE 60



For boats up to 42 ft



SIZE 60 CAR

Machined from a light alloy extrusion and hard anodised, fitted with a 316 s/steel swinging structure (about 45°). The sheave is made of (HRM) resin with 2 races of ball bearings. The slider runs on self-lubricating HS fiber inserts. Size 60 is suitable for boats up to 42 ft.

Weight = 0.65 kg **W = 2800 kg** R = 5600 kg

